

Mounting kit for shear or bending beams

For rated loads up to 10,000 kg [22,046 lb]

Model FA205

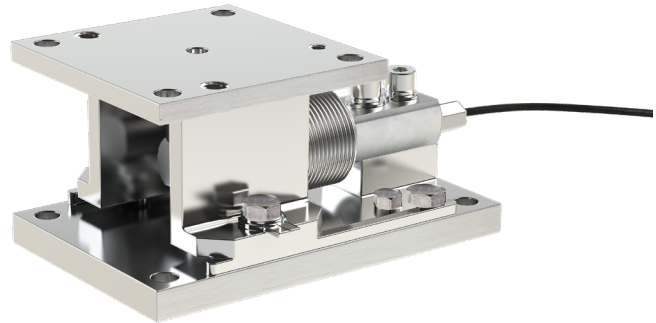
WIKA data sheet AC 50.17

Applications

- Tank weighing
- Vessel weighing
- Silo weighing
- Reactor weighing

Special features

- Rated loads of 250 ... 10,000 kg [551.2 ... 22,046 lb]
- Robust and industrial-strength stainless steel version
- Integrated lift-off protection and horizontal installation
- Low installation height, simple mounting
- Scope of delivery without shear or bending beam



**Mounting kit, model FA205,
with bending beam (not included)**

Description

The model FA205 mounting kit is designed for the model F3831 shear beam as well as for models F3803 and F3833 bending beams. The model FA205 enables simple and easy installation of the shear or bending beams under platforms, silos or any type of vessel.

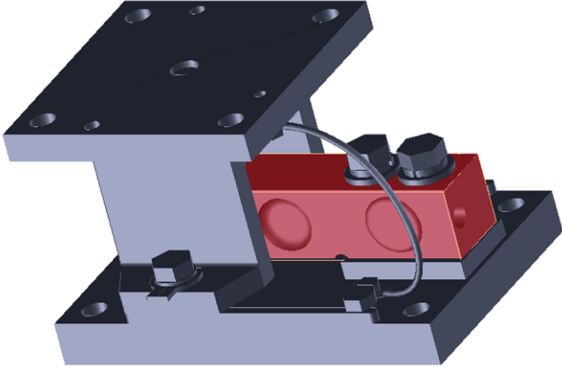
The mounting kit is designed to optimise force introduction into the shear or bending beam while, at the same time, enabling the greatest possible freedom of movement to compensate for temperature-related expansion, mechanical stresses and slight vibrations.

For stronger vibrations, such as those caused by an agitateur, we offer special accessories, see „[Accessories](#)“.

The model FA205 mounting kit can be used very flexibly. All modules of a set of scales are identical and can be freely aligned in any direction. Lift-off protection and a horizontal stop are integrated. The model FA205 features a compact design with a low profile.

The model F3831 shear beam and the models F3803 and F3833 bending beams (not included in the scope of delivery) are easy to install in and remove from the installed mounting kit.

Indicative image: Mounting kit with shear beam



Installation examples			
<p>For 3 vessel feet</p> <p>Tangential mounting</p> <p>Radial mounting</p>		<p>3-footed silo</p>	
<p>For 4 vessel feet</p> <p>Tangential mounting</p> <p>Radial mounting</p>		<p>4-footed silo</p>	

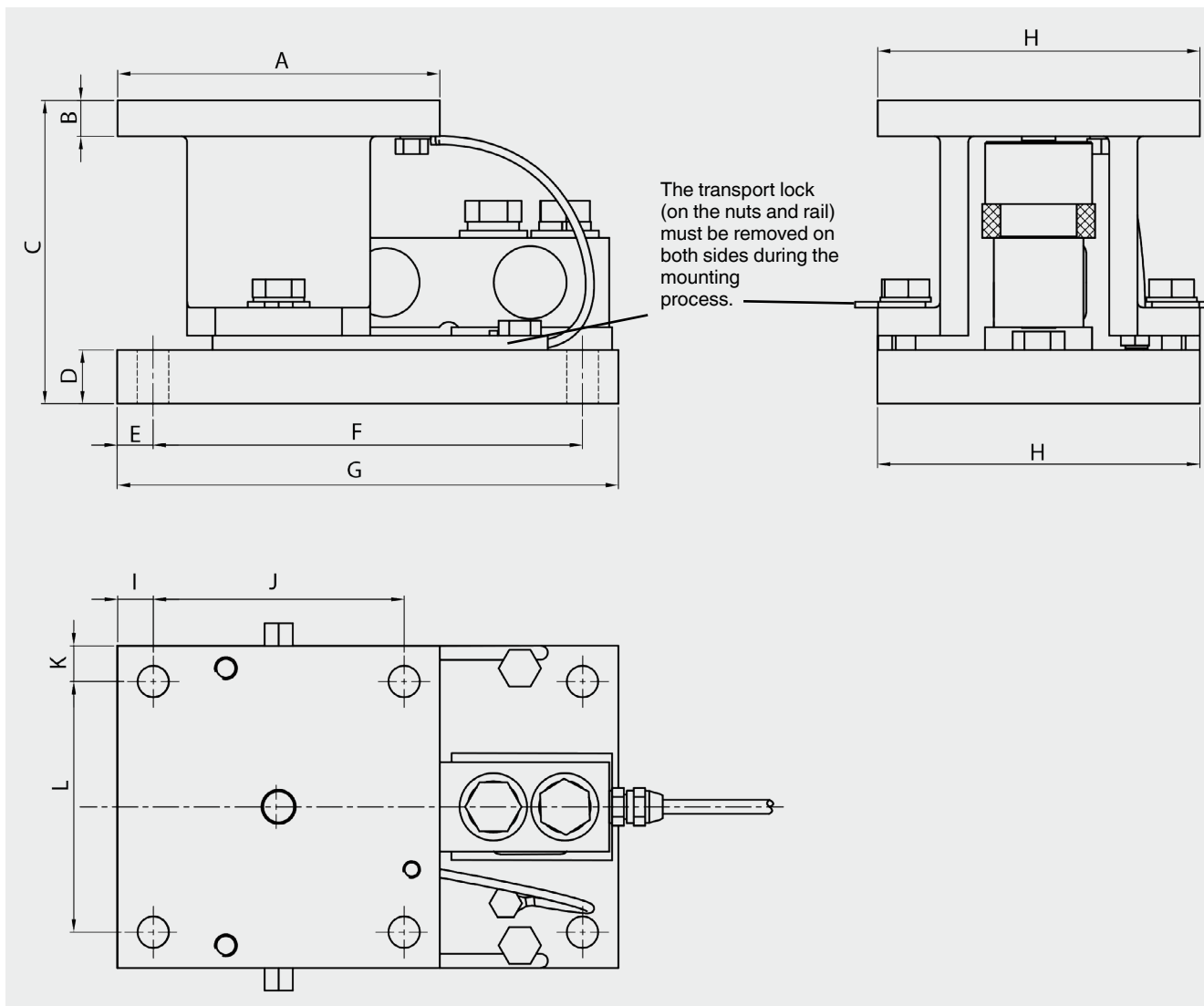
Specifications

Overview of versions for shear and bending beams	
Rated load up to 200 kg [441 lb]	
5; 10; 20; 30; 40; 50; 75; 100 kg [11; 22; 44; 66; 88; 110; 165; 220 lb]	F3803, F3833
150; 200 kg [331; 441 lb]	F3803, F3833
Rated load up to 2,500 kg [5,512 lb]	
250; 300; 500 kg [551; 661; 1,102 lb]	F3803, F3831, F3833
750; 1,000; 1,500; 2,000; 2,500 kg [1,653; 2,205; 3,307; 4,409; 5,512 lb]	F3831
Rated load up to 5,000 kg [11,023 lb]	
3,000; 5,000 kg [6,614; 11,023 lb]	F3831
Rated load up to 10,000 kg [22,046 lb]	
7,500; 10,000 kg [16,535; 22,046 lb]	F3831

Basic information	
Material (in contact with the environment)	Stainless steel
Max. permissible horizontal deflection	
Rated load up to 200 kg [441 lb]	±1.5 mm [±0.06 in]
Rated load up to 2,500 kg [5,512 lb]	±3 mm [±0.12 in]
Rated load up to 5,000 kg [11,023 lb]	±3 mm [±0.12 in]
Rated load up to 10,000 kg [22,046 lb]	±3 mm [±0.12 in]
Max. permissible compression force (without shear or bending beam)¹⁾	
Rated load up to 200 kg [441 lb]	12.5 kN [2,810 lbf]
Rated load up to 2,500 kg [5,512 lb]	63 kN [14,163 lbf]
Rated load up to 5,000 kg [11,023 lb]	125 kN [28,101 lbf]
Rated load up to 10,000 kg [22,046 lb]	250 kN [56,202 lbf]
Max. permissible lifting force	
Rated load up to 200 kg [441 lb]	11.5 kN [2,585 lbf]
Rated load up to 2,500 kg [5,512 lb]	15.7 kN [3,530 lbf]
Rated load up to 5,000 kg [11,023 lb]	54.3 kN [12,207 lbf]
Rated load up to 10,000 kg [22,046 lb]	86.5 kN [19,446 lbf]
Max. permissible lateral forces	
Rated load up to 200 kg [441 lb]	5.7 kN [1,281 lbf]
Rated load up to 2,500 kg [5,512 lb]	7.9 kN [1,776 lbf]
Rated load up to 5,000 kg [11,023 lb]	27 kN [6,070 lbf]
Rated load up to 10,000 kg [22,046 lb]	43 kN [9,667 lbf]
Weight	
Rated load up to 200 kg [441 lb]	3.6 kg [7.9 lb]
Rated load up to 2,500 kg [5,512 lb]	7 kg [15.4 lb]
Rated load up to 5,000 kg [11,023 lb]	7 kg [15.4 lb]
Rated load up to 10,000 kg [22,046 lb]	7 kg [15.4 lb]

1) The max. permissible compression force is specified without the shear or bending beam, as this value refers exclusively to the load-bearing capacity that the mounting kit model FA205 can withstand to ensure the stability of, for example, a container. Depending on the type, the shear or bending beam can withstand significantly lower compressive forces. To avoid damage to the shear or bending beam, see the respective data sheet for the specific type.

Dimensions in mm [in]



Version depending on rated load in kg	Dimensions in mm											
	A	B	C	D	E	F	G	H	I	J	K	L
200	102	8	83	12.7	10	145	165	102	10	82	10	82
2,500	114.4	12.7	105.6	19.1	12.7	152.4	177.9	114.4	12.7	89	12.7	89
5,000	152.4	19.1	136.6	25.4	25.4	184.2	235	152.4	25.4	101.6	25.4	101.6
10,000	203.2	25.4	180	34	25.4	304.8	355.6	203.2	25.4	152.4	25.4	152.4

Version depending on rated load in lb	Dimensions in inch											
	A	B	C	D	E	F	G	H	I	J	K	L
441	4	0.3	3.3	0.5	0.4	5.7	6.5	4	0.4	3.2	0.4	3.2
5,512	4.5	0.5	4.2	0.75	0.5	6	7	4.5	0.5	3.5	0.5	3.5
11,023	6	0.75	5.4	1	1	7.3	9.3	6	1	4	1	4
22,046	8	1	7.1	1.3	1	12	14	8	1	6	1	6

Accessories

Model	Description	Item number
-	Anti-vibration clamp for 250 kg ... 2.5 t [551 lb ... 5,512 lb]	64467554
-	Anti-vibration clamp for 3 t ... 5 t [6,614 lb ... 11,023 lb]	64471691

→ WIKA accessories can be found online at www.wika.de

Ordering information

Model / Rated load

© 03/2026 WIKA Alexander Wiegand SE & Co. KG, all rights reserved.
The specifications given in this document represent the state of the art at the time of publishing.
We reserve the right to make modifications to the specifications and materials.

