

Instrumentation valves and mounting accessories





Alexander Wiegand,
Chairman and CEO, WIKA

About us

As a family-run business acting globally, with 10,200 highly qualified employees, the WIKA group of companies is a worldwide leader in pressure and temperature measurement. The company also sets the standard in the measurement of level, force and flow, and in calibration technology.

Founded in 1946, WIKA is today a strong and reliable partner for all the requirements of industrial measurement technology, thanks to a broad portfolio of high-precision instruments and comprehensive services.

With manufacturing locations around the globe, WIKA ensures flexibility and the highest delivery performance. Every year, over 50 million quality products, both standard and customer-specific solutions, are delivered in batches of 1 to over 10,000 units.

With numerous wholly owned subsidiaries and partners, WIKA competently and reliably supports its customers worldwide. Our experienced engineers and sales experts are your competent and dependable contacts locally.

Contents

Industries and applications	4
Prevent fugitive emissions	5
Combinations with measuring instruments via flange connections	6
Combinations with measuring instruments via threaded connections	8
The products in comparison	10
Instrumentation valves	12
Needle and multipoint valve	Models IV10, IV11 12
Block-and-bleed valve	Models IV20, IV21 12
Valve manifold for differential pressure measuring instruments	Models IV30, IV31 13
Valve manifold for differential pressure measuring instruments	Models IV50, IV51 13
Ball valve, process and instrument version	Model BV 14
Check valve	Model CV 14
Monoflange, process and instrument version	Model IVM 15
Monoblock with threaded connection	Models IBM2, IBM3 16
Monoblock with flange connection	Models IBF1, IBF2, IBF3 16
Special valves	13
High-pressure needle valve	Model HPNV 17
Monoblock for sampling and injection processes	Models IBS3, IBJ4 17
Stopcock	Model 910.10 18
Shut-off valve	Model 910.11 18
Protective devices	19
Snubber	Model 910.12 19
Overpressure protectors, adjustable	Model 910.13 19
Syphon	Model 910.15 19
Mounting accessories	20
Connection adapter	Model 910.14 20
Instrument mounting bracket	Model 910.16 20
Sealings	Model 910.17 20
Special applications and approvals	21
WIKA worldwide	24

WIKA is a reliable supplier of valves and instrumentation with appropriate accessories.

Thanks to the ready-to-install instrument connections, the customer receives a complete, application-specific solution that is already tested and ready for use. This results in cost and time savings for our customers.

Our valves are available with certification for fugitive emissions, fire-safe designs and with tamper-proof, lockable handles,

ensuring safety for the operator, the plant and the environment. Thanks to our worldwide network, there is always a WIKA subsidiary near you to find the best solution for your application.

We are happy to support you in the selection of the correct components for your application. Alongside the extensive selection of instrumentation valves and accessories, WIKA also offers qualified assembly of different individual components into a complete measuring arrangement (instrument hook-up).

Industries and applications

Our wide range of valves and instrument hook-ups are used for gaseous, liquid, aggressive, highly viscous or crystallising media, also in aggressive environments. They are suitable for demanding applications in diverse industries.

- First shut-off valve for pressure tap to local instrument installation
- Media distribution, drain or vent in pipelines
- Direct connection of pressure measuring instruments to pipelines or vessels
- Wellhead control panels (WHCPs) and hydraulic power units (HPUs)
- Injection systems
- Sampling systems for process analysis
- Actuator controls
- Hydraulic power packs
- Test benches and calibration equipment
- Level measuring instruments and level indicators
- Blasting/cutting with water and high-pressure cleaning

Oil & gas



Chemical & petrochemical industries



Food & pharmaceuticals



Power generation



Water and wastewater



Machine building and automation



Power plants



Shipbuilding

Prevent fugitive emissions

Our needle valves can be supplied in accordance with EN-ISO 15848-1 and VDI 2440. The bonnets of these valves thus offer the following safety-relevant features: blow-out-proof valve spindle, non-rotating spindle tip with metal seat (low-wear operation), low torque for smooth and precise valve adjustment, even at high pressures.

The “fugitive emission” version also offers a special sealing packing made of RTFE, a reinforced PTFE. The corresponding valves are supplied with an orange ring on the bonnet and are thus clearly identifiable.

In addition to the needle valves, model BV ball valves as well as the IBM and IBF monoblocks are also approved by the ABS Group in accordance with the international EN-ISO 15848-1 standard for fugitive emissions.

Our valve manufacturing facility has also been equipped with a new state-of-the-art liquid and gas test bench, which enables us to perform a variety of tests from -320 ... +662 °F [-196 ... + 350 °C] in-house, such as:

- Type test and certificate for fugitive emissions
- Low-temperature test and certificate down to -320 °F [-196 °C]
- High-temperature test up to 662°F [350 °C]
- Tests and certificate for low emissions
- High-pressure gas test
- Validation of the design and test bench temperature/pressure range



Safety for personnel



Safety for the environment



Safety for the instruments



Combinations with measuring instruments via flange connections



+

Monoblock			Monoflange
IBF1 (Block)	IBF2 (Block-and-bleed)	IBF3 (Double-block-and-bleed)	IVM (Block / Block-and-bleed / Double-block-and-bleed)

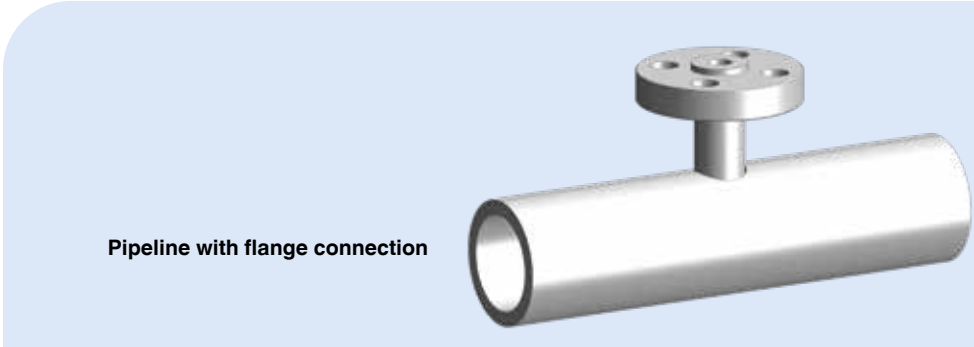
+

+



IBF
(Monoblock)

+



Pipeline with flange connection



+

Flushing ring



Flushing ring



Flushing ring with
single needle
valve



Flushing ring with
double ball valve



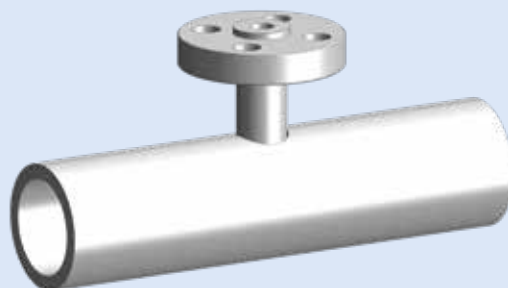
Customer-specific
flushing ring

+



IBF
(Monoblock)

+




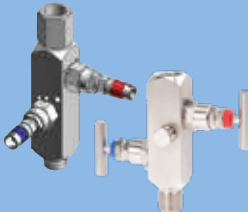




Pipeline with flange connection

Combinations with measuring instruments via threaded connections




+

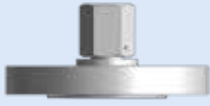
Flange adapter without valve		Flange adapter with valve			Monoflange
					
910.14 Flange with connection adapter	910.14 Flange with integrated connection adapter	IV1x Block / Multiport	IV2x Block-and-bleed	DIN shut-off valve Block / Block-and-bleed / Double-block-and-bleed	IVM Block / Monblock-and-bleed / Double-block-and-bleed

+

+



910.14
Flange with connection adapter



910.14
Flange with integrated connection adapter

+

+



Monoblock for first isolation

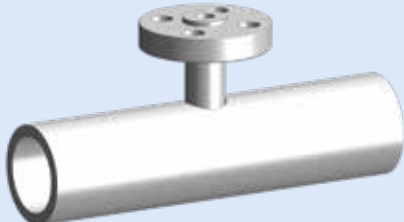


Monoblock for first isolation



+

Pipeline with flange connection





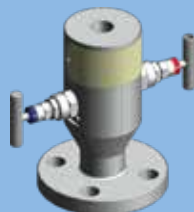
+

Monoblock

Mounting accessories



IBF1
Block

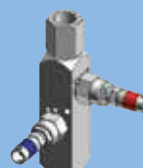


IBF2
Block-and-bleed

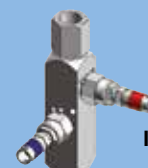


IBF3
Double-block-and-bleed

IV2x threaded



Connection adapter



IV2x compression fitting

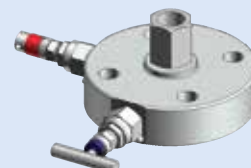


Precision pipe
(customer supplied)

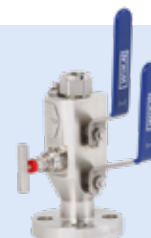
+



Flange adapter

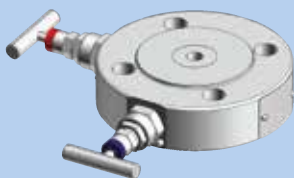


IVM
Monoflange

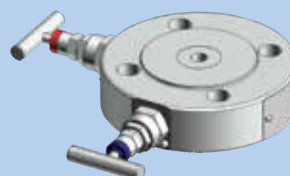


IBF1, IBF2, IBF3
Monoblock

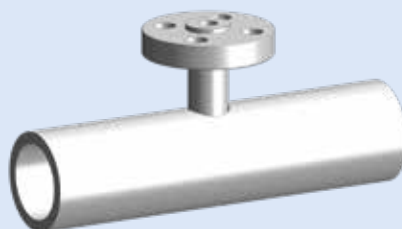
+



Sandwich monoflange IVM







+



Pipeline with flange connection

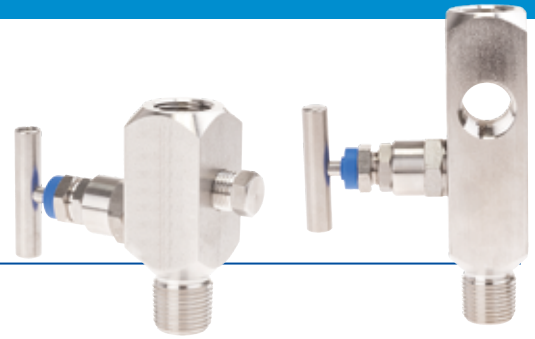
The products in comparison

				
	Needle valve, block-and-bleed valve	Valve manifold	Ball valve	Check valve
Model	IV1, IV2	IV3, IV5	BV	CV
Gas application	◆	◆	◆	◆
Application with liquids	◆*	◆*	◆	◆
Cryogenic version	◆	◆	◆	◆
Fire-safety tested	◆	◆	Process version: ISO 10497 3rd ed., API 607 7th ed.	◆
Fugitive-emission tested	TA Luft, ISO 15848-1	TA Luft, ISO 15848-1	◆	◆
Reference standards	ASME B16.34, ASME B1.20.1, ASME B31.3, MSS SP-99	ASME B16.34, ASME B1.20.1, ASME B31.3, MSS SP-99	ASME B16.34, ASME B1.20.1, ASME B31.3, MSS SP-99, ASME BPVC, ASME B31.1, ISO 17292, ASME B16.5	ASME B16.34, ASME B1.20.1, MSS SP-99
Assembly with measuring instrument (instrument hook-up)	◆	◆	◆	◆
Sealing packing and min. working temperature	PTFE, RTFE and graphite (min. temperature -67°F [-55 °C])	PTFE, RTFE and graphite (min. temperature -67°F [-55 °C])	PEEK, high-temperature thermoplastic (HTT) (min. temperature -67°F [-55 °C])	NBR, FKM and PTFE (min. temperature -67°F [-55 °C])
Data sheet	AC 09.22	AC 09.19	AC 09.28	AC 09.29
For details, see page	12	13	14	14

The information in the table above serves only as a reference and any application should be evaluated in accordance with the project specifications. WIKA can provide technical support in the evaluation of the best solution for your applications.

* high viscos liquids are not applicable

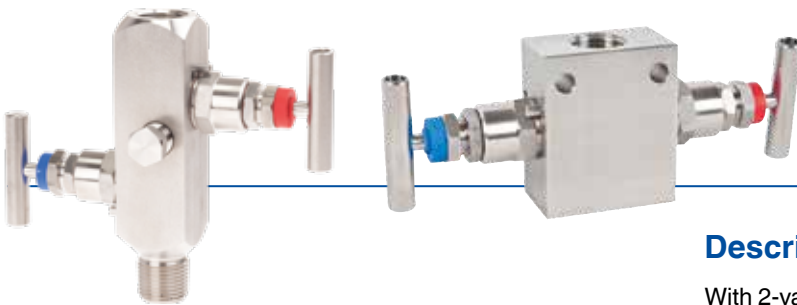
Needle and multiport valve Models IV10, IV11



Description

Needle valves and multiport valves separate the process from measuring instruments such as pressure gauges, switches or transmitters. By closing this valve the instrument can be safely dismantled for services like recalibration or replacement. With the vent connection option, the instrument can be vented to the atmosphere by means of the needle valve.

Already in the standard version, the multiport valve is equipped with two additional connections. These can be used either as vent connections or for the connection of additional instruments.



Block-and-bleed valve Models IV20, IV21

Description

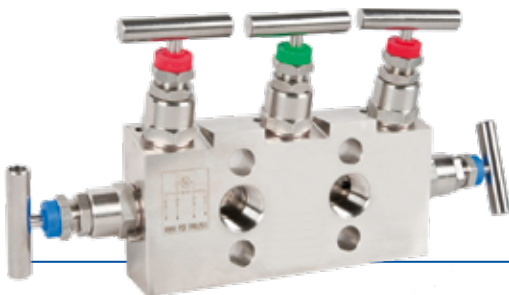
With 2-valve manifolds, the block-and-bleed version is standard. The shut-off valve separates the process from measuring instruments such as pressure gauges, switches or transmitters. By closing this valve the instrument can be safely dismantled for services like recalibration or replacement. The vent valve allows the safe venting of the instrument, prior to the dismantling or for zero point check.



Valve manifold for differential pressure measuring instruments, 3-valve manifold Models IV30, IV31

Description

The 3-valve manifold consists of two shut-off valves and one pressure compensating valve. The shut-off valves separate the process from the differential pressure measuring instrument. The pressure compensating valve enables the compensation between \ominus side and \oplus side to avoid one-sided overload during commissioning and operation.



Valve manifold for differential pressure measuring instruments, 5-valve manifold Models IV50, IV51

Description

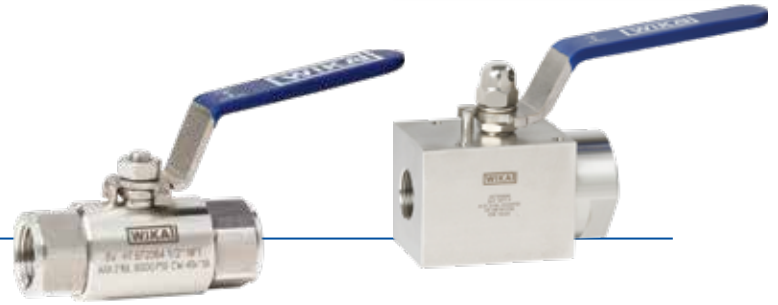
Compared to the 3-valve manifold, the 5-valve manifold is equipped with two additional vent valves. One vent valve per pressure side allows operators the targeted venting of one or both pressure sides of the measuring arrangement.



Ball valve, process and instrument version Model BV

Description

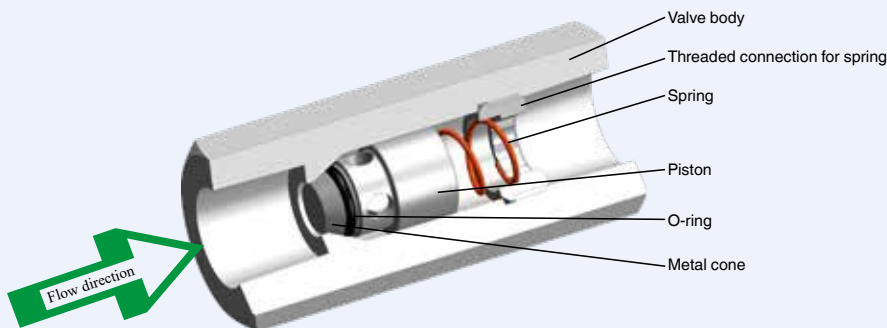
The simple and robust design, with a safety factor of 4:1, enables model BV ball valves a wide spectrum of use. This ranges from the simple distribution of compressed air through to demanding applications in the oil and gas industry. The process version of the ball valve has been designed to meet the requirements of the process industry, in particular for natural gas and aggressive media applications.



Check valve Model CV

Description

The sealing element (piston) has a double sealing system from an elastic O-ring and a metal cone. With any back pressure, the soft O-ring and then the sealing face of the metal cone prevent the reverse flow of the medium. This principle of double sealing ensures reliable leak tightness.



Monoflange, process and instrument version Model IVM

Description

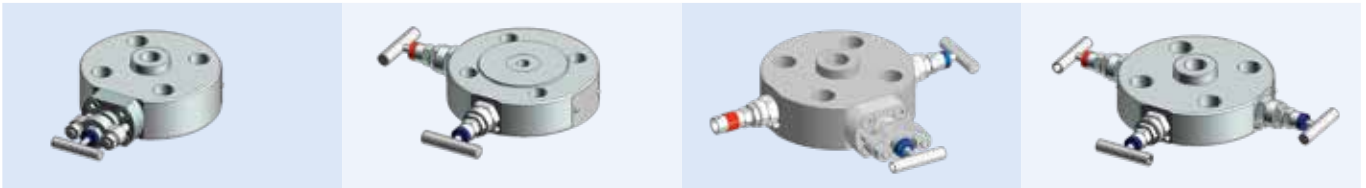
Due to its one-piece design, the model IVM monoflange can withstand high overpressures. It ensures a robust and compact mounting of the measuring instrument directly to the process flange. The use of metal and graphite seals allows working at high temperatures.



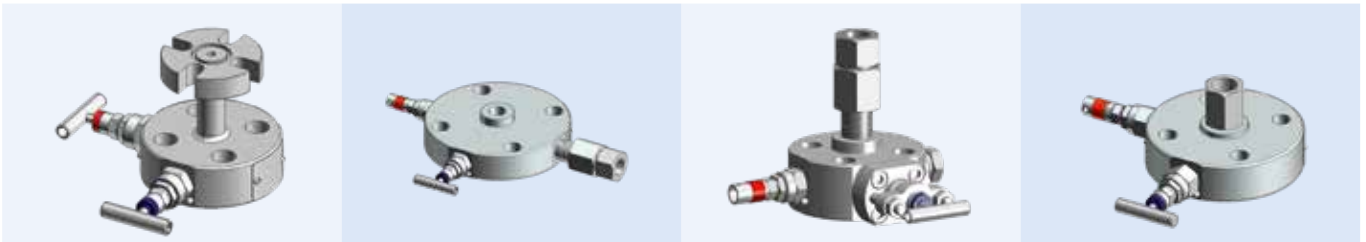
YouTube video
What is a monoflange? | Function,
versions and fields of application



Different combinations for monoflanges in process and instrument version



Special connections (IEC 61518 and union nut)



Monoblock with threaded connection Models IBM2, IBM3

Description

The monoblock has been designed specifically to fit into the small space of control panel and valve battery installations. With its very compact dimensions, the monoblock can be used in a wide range of applications providing high overpressure safety within a large spectrum of temperature ranges. The modular monoblock design allows using an arrangement of ball valves and/or needle valves in the same valve body.



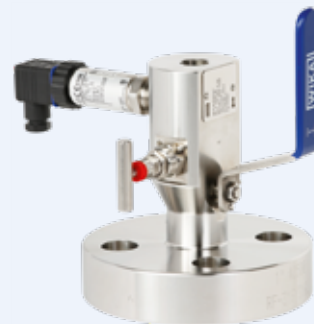
Blog
Play it safe with double
block & bleed



Monoblock with flange connection Models IBF1, IBF2, IBF3

Description

The monoblock has been designed to meet the requirements of the process industry, especially for natural gas and aggressive media applications. The compact design integrates one or two shut-off valves to separate the process from the instrument side and a vent valve.



High-pressure needle valve Model HPV

Description

The model HPV high-pressure needle valves have been developed for high-pressure applications of 15,000 ... 60,000 psi (1,034 ... 4,136 bar). The valve is particularly suitable for control panels, where the space is restricted, or for test benches.



The non-rotating valve spindle prevents seizing and scoring, even if the valve is rarely opened or only partially closed.

With the blow-out proof design of the valve, working safety is ensured, especially in applications with high pressure loading and frequent pressure cycles.

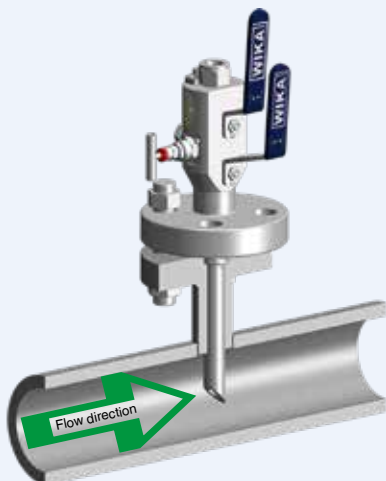


Monoblock for sampling and injection processes Models IBS3, IBJ4

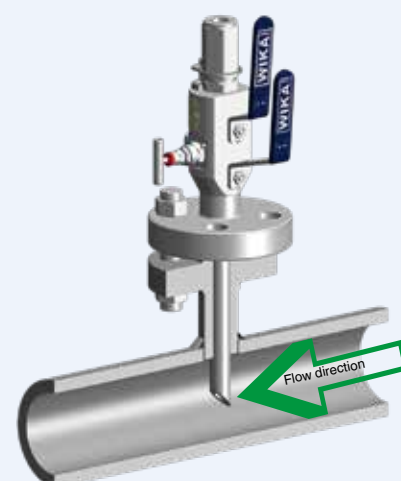
Description

The monoblock with probe for sampling and injection processes has been designed to meet the requirements of the process industry. It is especially well suited to applications in natural gas and aggressive media. The compact design integrates two shut-off valves to separate the process from the instrument side.

Model IBS3, for sampling processes



Model IBJ4, for injection processes



Stopcock Model 910.10

Specifications per data sheet:

AC 09.01

Design:

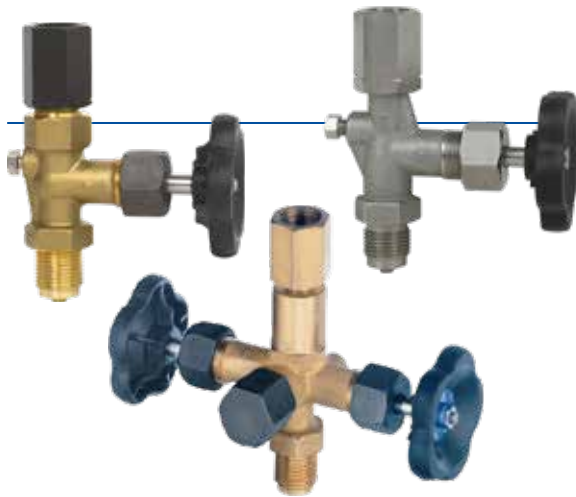
- DIN 16261: PN 16 cocks with female/female and female/male connection for pressure gauges
- DIN 16262: PN 6 and PN 16 cocks with adjusting nut and male connection for pressure gauges
- DIN 16263: PN 16 cocks with adjusting nut and male connection and test connection for pressure gauges

Max. medium temperature:

+122 °F [+50 °C]

Nominal pressure:

To 363 psi [25 bar]



Shut-off valve Model 910.11

Specifications per data sheet:

AC 09.02

Design:

- DIN 16270: With vent screw
- DIN 16271: With test connection M20 x 1.5 and vent screw
- DIN 16272: With separate isolating test connection M20 x 1.5

Form A

LH-RH adjusting nut - male

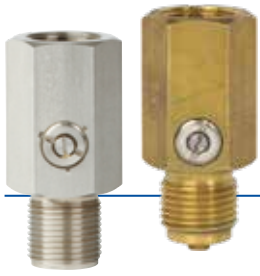
Form B

Nipple and union nut - male, with shaft for instrument mounting bracket

Max. medium temperature:

- Brass: PN 250 (G ¼ thread: PN 125)
- Steel / Stainless steel: PN 400





Snubbers, adjustable Model 910.12

Specifications per data sheet:

AC 09.03

Design:

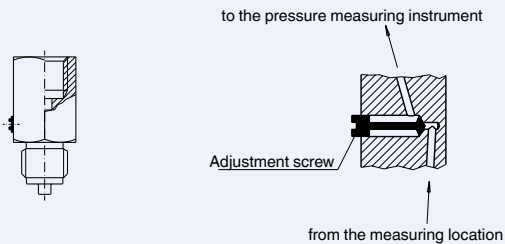
Brass, steel and stainless steel 316Ti / 1.4571

Max. medium temperature:

+248 °F [+120 °C]

Snubbers are used to reduce the effects of pressure surges on the measuring instrument.

Operating principle



Overpressure protector, adjustable Model 910.13

Specifications per data sheet:

AC 09.04

Design:

Valve body from brass or stainless steel 316Ti / 1.4571

Setting ranges:

5.8 ... 36.3 psi / 29 ... 87 psi / 72.5 ... 363 psi / 290 ... 870 psi /
725 ... 3,626 psi / 3,481 ... 5,802 psi
[0.4 ... 2.5 bar / 2 ... 6 bar / 5 ... 25 bar / 20 ... 60 bar /
50 ... 250 bar / 240 ... 400 bar]

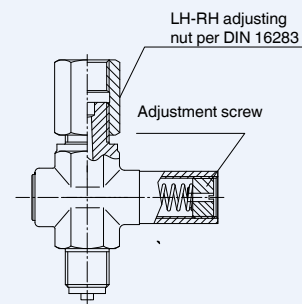
Max. temperature:

+266 °F [+130 °C]

Through a helical spring, the outlet position is maintained until the pressure acting on the piston overcomes the back pressure of the spring, thus closing the valve. Once the pressure drops, the valve opens again and the piston returns to its resting position.



Form A, LH-RH adjusting nut/male



Syphon Model 910.15



Specifications per data sheet:

AC 09.06

Design:

DIN 16282 / Industrial standard designs

Form:

U-form / trumpet form / compact syphon

Max. operating pressure and temperature:

- 1,508 psi / 752 °F [104 bar / 400 °C]
- 1,740 psi / 572 °F [120 bar / 300 °C]
- 2,320 psi / 248 °F [160 bar / 120 °C]
- 6,092 psi / 212 °F [420 bar / 100 °C] (compact syphon)

Connection adapter Model 910.14

Specifications per data sheet:
AC 09.05

Design:

- Female - male
 - Female - female
 - Male - male
 - Self-sealing connecting nipple
 - LH-RH adjusting nut DIN 16283
 - Union nut and nipple DIN 16284
 - Compression fitting with ferrule
-



Instrument mounting bracket Model 910.16

Specifications per data sheet:
AC 09.07

Design:

- Instrument mounting bracket for connection via adapter: Bracket per DIN 16281 form H for wall mounting and form A for wall, pipe and support mounting
 - Bracket for pipe mounting
 - Adapter
 - Instrument mounting bracket for connection without adapter: Bracket for wall mounting or pipe mounting
-

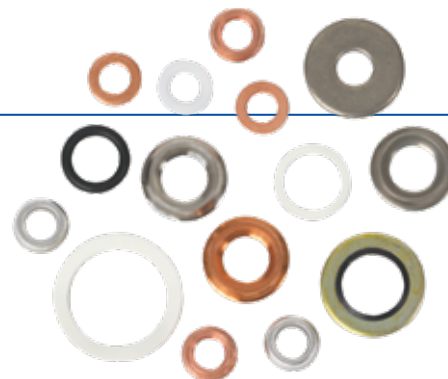


Sealings Model 910.17

Specifications per data sheet:
AC 09.08

Design:

- WIKA sealing
 - Flat gasket
 - Edge sealing ring
-



Special applications



Blog
Combination of pressure measuring instrument with accessories – Hook-up instead of own assembly



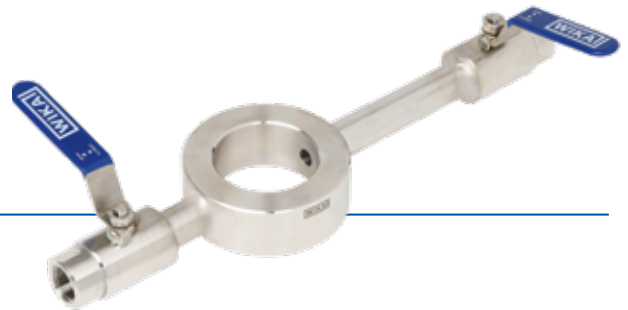
Diaphragm seal assembly

Instrument hook-up

Mounting arrangements

WIKA is happy to support you in the selection of the correct components for your application. Alongside the extensive selection of instrumentation valves and accessories, WIKA also offers qualified assembly of different individual components into a complete measuring arrangement (“instrument hook-up”).

In addition to the valves and protective devices described here, combination with diaphragm seal systems is also possible.



Flushing ring

Flushing rings enable cleaning and maintenance of the measuring location without time-consuming dismantling of the measuring system. Cleaning is carried out via the bore of the flushing ring. For a problem-free supply of the respective cleaning medium, a needle valve or a ball valve, for example, can be mounted to the flushing ring. Due to their high-quality workmanship, WIKA needle valves enable precise control of the media flow, even at high pressures.

WIKA ball valves can be used, in particular, with viscous cleaning liquids.

The function of the flushing ring, in conjunction with an upstream shut-off valve, also enables simple on-site calibration of the measuring location. The process can also be vented or drained via the bore and valve. With the aid of the flushing ring, users can also take samples of the process medium.

Advantages

- Easy cleaning and maintenance
- On-site calibration
- Venting of the process
- Sampling

Model 910.27 flushing rings, with appropriate connections and materials, can be adapted to almost any application. There are versions with a bore on one or both sides, which are suitable for a wide range of cleaning applications. Installation is simple and leak-free.

Special solutions



Flushing ring for flange-connection diaphragm seals



Needle valve, block-and-bleed valve



Monoflange, process and instrument version

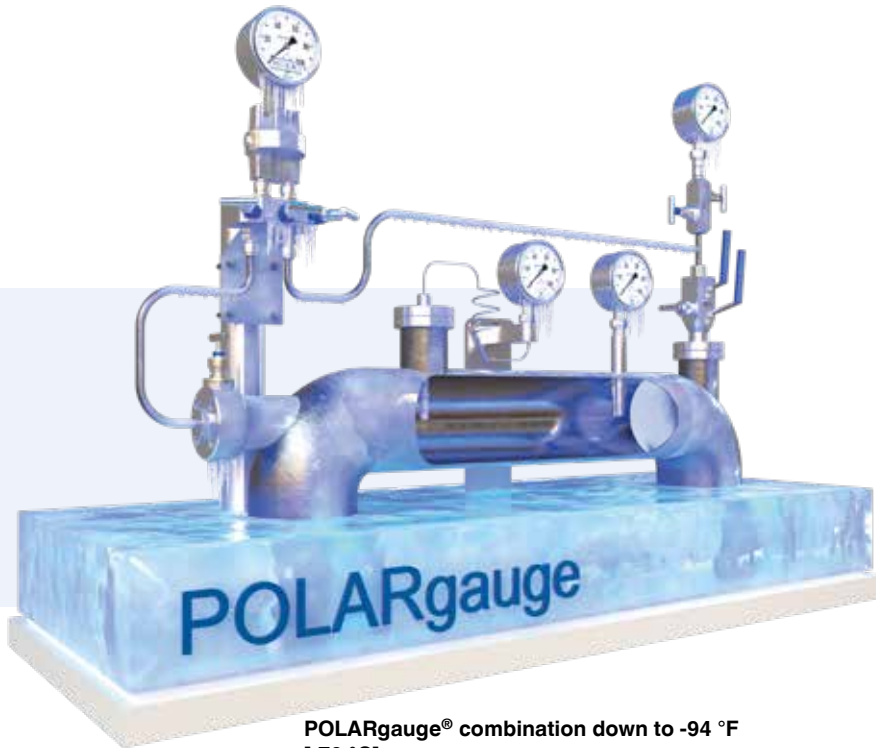


Monoblock with flange connection



Ball valve

For use at low temperatures



POLARgauge® combination down to -94 °F [-70 °C]

The POLARgauge® and POLARvalve series have been designed specifically for measurement at extremely low ambient temperatures down to -94 °F [-70 °C]. The instruments are mainly used in crude oil and natural gas processing. For this product family, a special low-temperature silicone oil has been specified. Even at -94 [-70 °C], this oil remains in a state that enables correct measurement and measured value display.



Option: Cryogenic needle valve bonnet down to -321 °F [-196 °C]

Other versions of needle and ball valves



Certificates and approvals

Given the increasing demands in terms of quality and product safety of industrial products, certified measuring instruments for pressure contribute considerably to the safety of the production processes. Therefore we offer a wide range of approvals and certificates.

Tests

- PMI test
- Roughness measurement
- Coating thickness measurement
- Dye penetrant test
- Surface roughness
- Leak test
- Pressure test

Approvals

- Pressure equipment directive
- EHEDG
- 3-A
- FDA
- NACE
- BAM
- EAC
- GOST
- ATEX

Certificates

- Ingress protection
- Material proof
- RoHS
- Oil- and grease-free
- Accuracies of the span
- Switching accuracy
- Indication accuracy



Europe

Austria
WIKA Messgeräteevertreib
Ursula Wiegand GmbH & Co. KG
Perfektastr. 73
1230 Vienna
Tel. +43 1 8691631
info@wika.at
www.wika.at

Belarus
IOOO «WIKА BELRUS»
18B Krasnozvezdnaya Street, office 61
220034 Minsk
Tel. +375 17 2244164
info@wika.by
www.wika.by

Benelux
WIKА Benelux
Industrial estate De Berk
Newtonweg 12
6101 WX Echt
Tel. +31 475 535500
info@wika.nl
www.wika.nl

Bulgaria
WIKА Bulgaria EOOD
Akad.Ivan Geshov Blvd. 2E
Business Center Serdika, building 3
Office 3/104
1330 Sofia
Tel. +359 2 82138-10
info@wika.bg
www.wika.bg

Croatia
WIKА Croatia d.o.o.
Hrastovicka 19
10250 Zagreb-Lucko
Tel. +385 1 6531-034
info@wika.hr
www.wika.hr

Denmark
WIKА Danmark A/S
Banevænget 13
3460 Birkerød
Tel. +45 4581 9600
info@wika.as
www.wika.as

Finland
WIKА Finland Oy
Tammasaarekatu 1
00180 Helsinki
Tel. +358 9 682492-0
info@wika.fi
www.wika.fi

France
WIKА Instruments s.a.r.l.
Immeuble Le Trident
38 avenue du Gros Chêne
95220 Herblay
Tel. +33 1 787049-46
info@wika.fr
www.wika.fr

Germany
WIKА Alexander Wiegand SE & Co. KG
Alexander-Wiegand-Str. 30
63911 Klingenberg
Tel. +49 9372 132-0
info@wika.de
www.wika.de

Italy
WIKА Italia S.r.l. & C. S.a.s.
Via G. Marconi 8
20044 Arese (Milano)
Tel. +39 02 93861-1
info@wika.it
www.wika.it

Poland
WIKА Polska spółka z ograniczoną
odpowiedzialnością sp. k.
Ul. Legska 29/35
87-800 Wloclawek
Tel. +48 54 230110-0
info@wikipolska.pl
www.wikipolska.pl

Romania
WIKА Instruments Romania S.R.L.
050897 Bucuresti
Calea Rahovei Nr. 266-268
Corp 61, Etaj 1
Tel. +40 21 4048327
info@wika.ro
www.wika.ro

Russia
AO "WIKА MERA"
Sosenskoye settlement
Nikolo-Khovanskoye, 1011A / 1
office 2 / 2.09
142770, Moscow
Tel. +7 495-648018-0
info@wika.ru
www.wika.ru

Serbia
WIKА Merna Tehnika d.o.o.
Sime Solaje 15
11060 Beograd
Tel. +381 11 2763722
info@wika.rs
www.wika.rs

Spain
Instrumentos WIKА S.A.U.
C/Josep Carner, 11-17
08205 Sabadell Barcelona
Tel. +34 933 9386-30
info@wika.es
www.wika.es

Switzerland
WIKА Schweiz AG
Industriestrasse 11
6285 Hitzkirch
Tel. +41 41 91972-72
info@wika.ch
www.wika.ch

Turkey
WIKА Instruments
Endüstriyel Ölçüm Cihazları Tic. Ltd. Şti.
Şerifali Mah. Bayraktar Bulvarı No:17
34775 Ümraniye, Istanbul
Tel. +90 216 41590-66
info@wika.com.tr
www.wika.com.tr

Ukraine
TOV WIKА Prylad
Str. Generala Almazova, 18/7
Office 101
01133 Kiev
Tel. +38 044 496 83 80
info@wika.ua
www.wika.ua

United Kingdom
WIKА Instruments Ltd
Merstham, Redhill RH13LG
Tel. +44 1737 644-008
info@wika.co.uk
www.wika.co.uk

North America

Canada
WIKА Instruments Ltd.
Head Office
3103 Parsons Road
Edmonton, Alberta, T6N 1C8
Tel. +1 780 4637035
info@wika.ca
www.wika.ca

USA
WIKА Instrument, LP
1000 Wiegand Boulevard
Lawrenceville, GA 30043
Tel. +1 770 5138200
info@wika.com
www.wika.com

Gayesco-WIKА USA, LP
229 Beltway Green Boulevard
Pasadena, TX 77503
Tel. +1 713 4750022
info@wikahouston.com
www.wika.us

Mensor Corporation
201 Barnes Drive
San Marcos, TX 78666
Tel. +1 512 3964200
sales@mensor.com
www.mensor.com

Latin America

Argentina
WIKА Argentina S.A.
Cte. Benjamin Franklin 600
(B1603BRL) Villa Martelli
Buenos Aires
Tel. +54 11 5442 0000
ventas@wika.com.ar
www.wika.com.ar

Brazil
WIKА do Brasil Ind. e Com. Ltda.
Av. Ursula Wiegand, 03
18560-000 Iperó - SP
Tel. +55 15 3459-9700
ventas@wika.com.br
www.wika.com.br

Chile
WIKА Chile S.p.A.
Av. Providencia 2319
Providencia Santiago
Tel. +56 9 4279 0308
info@wika.cl
www.wika.cl

Colombia
Instrumentos WIKА Colombia S.A.S.
Avenida Carrera 63 # 98 - 25
Bogotá - Colombia
Tel. +57 601 7021347
info@wika.co
www.wika.co

Mexico
Instrumentos WIKА Mexico
S.A. de C.V.
Calzada San Isidro No. 97 P-1-1
Col. San Francisco Tepecala Deleg.
Azcapotzalco
Ciudad de Mexico CP 02730
Tel. +52 55 50205300
ventas@wika.com
www.wika.mx

Asia

China
WIKА Instrumentation Suzhou Co., Ltd.
81, Ta Yuan Road, SND
Suzhou 215011
Tel. +86 512 6878 8000
info@wika.cn
www.wika.com.cn

India
WIKА Instruments India Pvt. Ltd.
Village Kesnand, Wagholi
Pune - 412 207
Tel. +91 20 66293-200
sales@wika.co.in
www.wika.co.in

Japan
WIKА Japan K. K.
MG Shibaura Bldg. 6F
1-8-4, Shibaura, Minato-ku
Tokyo 105-0023
Tel. +81 3 5439-6673
info@wika.co.jp
www.wika.co.jp

Kazakhstan
TOO WIKА Kazakhstan
Microdistrict 1, 50/2
050036 Almaty
Tel. +7 727 225 9444
info@wika.kz
www.wika.kz

Korea
WIKА Korea Ltd.
39 Gajangsaneopseo-ro Osan-si
Gyeonggi-do 447-210
Tel. +82 2 869-0505
info@wika.co.kr
www.wika.co.kr

Malaysia
WIKА Instrumentation (M) Sdn. Bhd.
No. 23, Jalan Jurukur U1/19
Hiicom Glenmarie Industrial Park
40150 Shah Alam, Selangor
Tel. +60 3 5590 6666
info@wika.my
www.wika.my

Philippines
WIKА Instruments Philippines Inc.
Ground Floor, Suite A
Rose Industries Building
#11 Pioneer St., Pasig City
Philippines 1600
Tel. +63 2 234-1270
info@wika.ph
www.wika.ph

Singapore
WIKА Instrumentation Pte. Ltd.
13 Kian Teck Crescent
628878 Singapore
Tel. +65 6844 5506
info@wika.sg
www.wika.sg

Taiwan
WIKА Instrumentation Taiwan Ltd.
Min-Tsu Road, Pinjen
32451 Taoyuan
Tel. +886 3 420 6052
info@wika.tw
www.wika.tw

Thailand
WIKА Instrumentation Corporation
(Thailand) Co., Ltd.
850/7 Lat Krabang Road, Lat Krabang
Bangkok 10520
Tel. +66 2 32668-73
info@wika.co.th
www.wika.co.th

Africa / Middle East

Egypt
WIKА Near East Ltd.
Villa No. 6, Mohamed Fahmy
Elmohdar St. - of Eltayaran St.
1st District - Nasr City - Cairo
Tel. +20 2 240 13130
info@wika.com.eg
www.wika.com.eg

Namibia
WIKА Instruments Namibia Pty Ltd.
P.O. Box 31263
Pionierspark
Windhoek
Tel. +26 4 61238811
info@wika.com.na
www.wika.com.na

Nigeria
WIKА WEST AFRICA LIMITED
Block B10, 1004 Estate
Victoria Island, Lagos
Tel. +234 17130019
info.ng@wika.com
www.wika.com.ng

Saudi Arabia
WIKА Saudi Arabia Llc
Wh#3, Al Tauun Al Khobar 34644
Baghlaif Al Sanaiya Aziziya
Plan Sh-Kh 564, Land No 13&15
Al Khobar
Tel. +966 53 555 0874
mohammed.khaiz@wika.com
www.wika.ae

South Africa
WIKА Instruments Pty. Ltd.
Chivers Street, Denver
Johannesburg, 2094
Tel. +27 11 62100-00
sales@wika.co.za
www.wika.co.za

United Arab Emirates
WIKА Middle East FZE
Warehouse No. RB08JB02
P.O. Box 17492
Jebel Ali, Dubai
Tel. +971 4 883-9090
info@wika.ae
www.wika.ae

Australia

Australia
WIKА Australia Pty. Ltd.
Unit K, 10-16 South Street
Rydalmere, NSW 2116
Tel. +61 2 88455222
sales@wika.com.au
www.wika.com.au

New Zealand
WIKА Instruments Limited
Unit 7 / 49 Sainsbury Road
St Lukes - Auckland 1025
Tel. +64 9 8479020
info@wika.co.nz
www.wika.co.nz

WIKА USA

1000 Wiegand Boulevard
Lawrenceville, GA 30043
Toll Free 1-888-WIKА-USA (945-2872)
Tel (770) 513-8200 Fax (770) 338-5118
info@wika.com • www.wika.com