

Flame rod Kanthal tip Model KNTH



WIKA data sheet SP 05.18

Applications

- Crude furnaces
- Fluid catalytic cracking furnaces
- Hydrotreater furnaces
- Hydrocracking furnaces

Special features

- Designed for the rigors of higher preheat furnaces (482 °C / 900 °F)
- Simple maintenance tip replacement

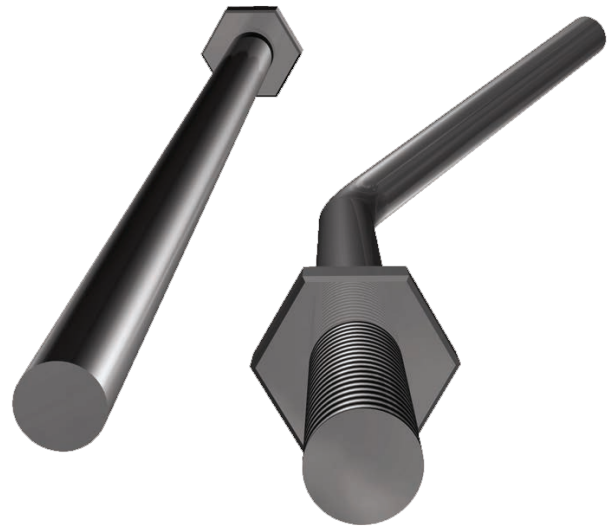


Fig. left: Straight design
Fig. right: Bent design

Description

Kanthal is used for the flame rod tip due to the very harsh, oxidising environment of the pilot light flame.

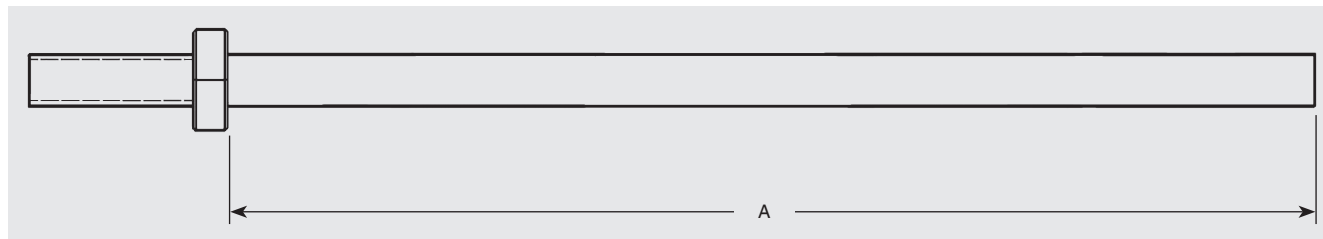
The Kanthal tip may wear out and/or warp over time and should be replaced. It needs to be ordered separately from the GFR-3 flame rod and can also be ordered as a stand-alone replacement piece.

Ordering information

Straight Kanthal

Order code: **KNTH -** **- S**
"A"-Dimension

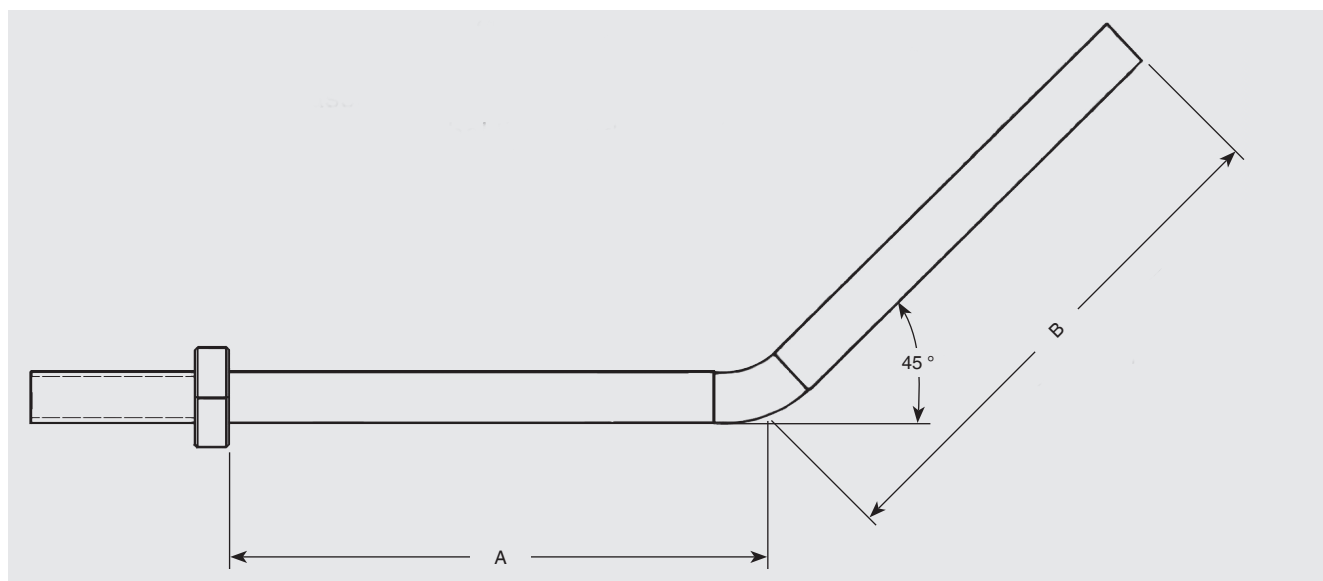
The straight Kanthal tip is used in pilot assemblies that have flame diverters to route the pilot flame to the flame rod. Care must be taken to insure that the flame is in contact with the Kanthal tip and not the ceramic insulator.



Bent Kanthal

Order code: **KNTH -** **-** **- C**
"A"-Dimension "B"-Dimension

The bent Kanthal tip is used in pilot assemblies that do not have flame diverters to route the pilot flame to the flame rod. Bent Kanthal tips are deflected by 45°.



© 2015 WIKA Alexander Wiegand SE & Co. KG, all rights reserved.
The specifications given in this document represent the state of engineering at the time of publishing.
We reserve the right to make modifications to the specifications and materials.



WIKAL
WIKAL Alexander Wiegand SE & Co. KG
Alexander-Wiegand-Straße 30
63911 Klingenberg/Germany
Tel. +49 9372 132-0
Fax +49 9372 132-406
info@wika.de
www.wika.de